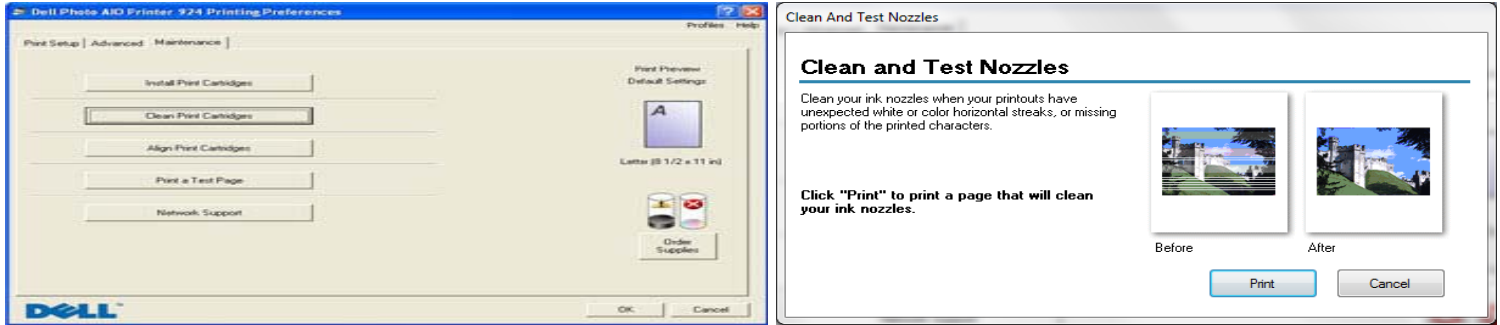


Ink Cartridges Print head Cleaning Troubleshooting for Dell Cartridges Printer Error Messages

After installing the cartridges, go to the "**Maintenance**" section of the printer solution center

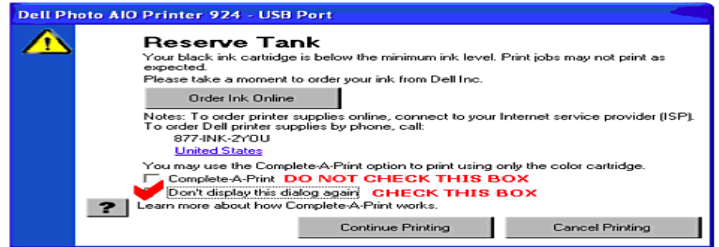
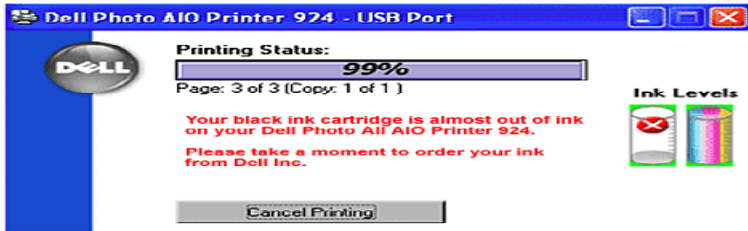


Attempt to "Clean Print Cartridges" a few times.



Dell 743/745/M4640 / M4646 / J5566 / J5567 / DH828 / DH829 / DH883 / DH884 MK990 / MK991 / MK992 / MK993 /KX701/KX703/JP451/JP453

Print an alignment page using the printer control panel. For every print job you send, you will see the pop-up, Reserve Tank - Your black/color ink cartridge is below the minimum ink level. Print jobs may not print as expected Please click Continue Printing



After printing the alignment page using the printer control panel, you may see the sign on the panel, **Alignment Problem**. Remove tape from cartridges or check troubleshooting. Press (start button) to retry. Please press the **Cancel Button**. Then the printer will be ready to print.



Dell JF333 WP322/UK852

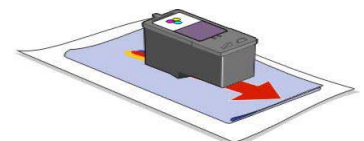
After printing the alignment page using the computer, scan the alignment page before the print job.



With every print job you will see the pop-up, Reserve Tank. Please click Continue Printing.

Second option **Clean nozzles**

- 1 Remove the print cartridges from the printer .
- 2 Dampen a clean, lint-free cloth with water, and place the cloth on a flat surface.
- 3 Gently hold the nozzles against the cloth for about three seconds, and then wipe in the direction shown



4. You should now hopefully have a small ink soaked patch on the tissue with traces of all the relevant colors



Then Reinstall the cartridges .should be ready to print

Cleaning the Ink Cartridge Nozzles

You may need to clean the nozzles when:

- 1-White lines appear in graphics or solid black areas.
- 2-Print appears smudged or too dark.
- 3-Colors fade, do not print, or do not print correctly.
- 4-Vertical lines appear jagged. or edges appear rough.