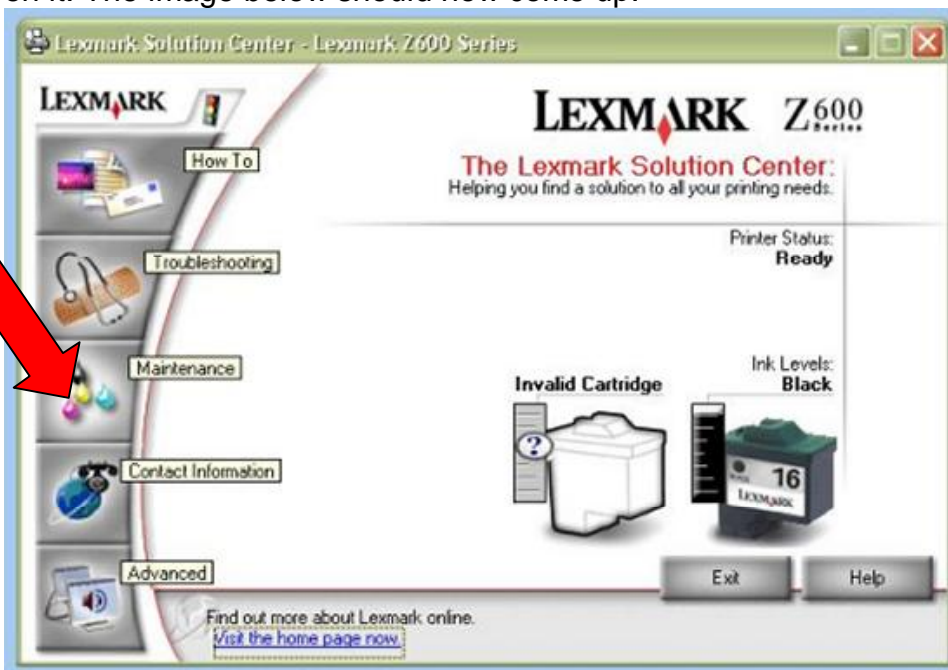


# Instructions for Installing a New/Refilled Lexmark Cartridge

Many Lexmark printers use cartridges that are available in two different volumes of ink. In order that the ink level indicators can be used it is important that the printer knows which cartridge, and therefore the volume of ink, is installed. This is for two reasons. Firstly in order that the user can have some warning of low ink levels, and secondly, to prevent damage to the printhead by running it too dry which can impair a successful refill.

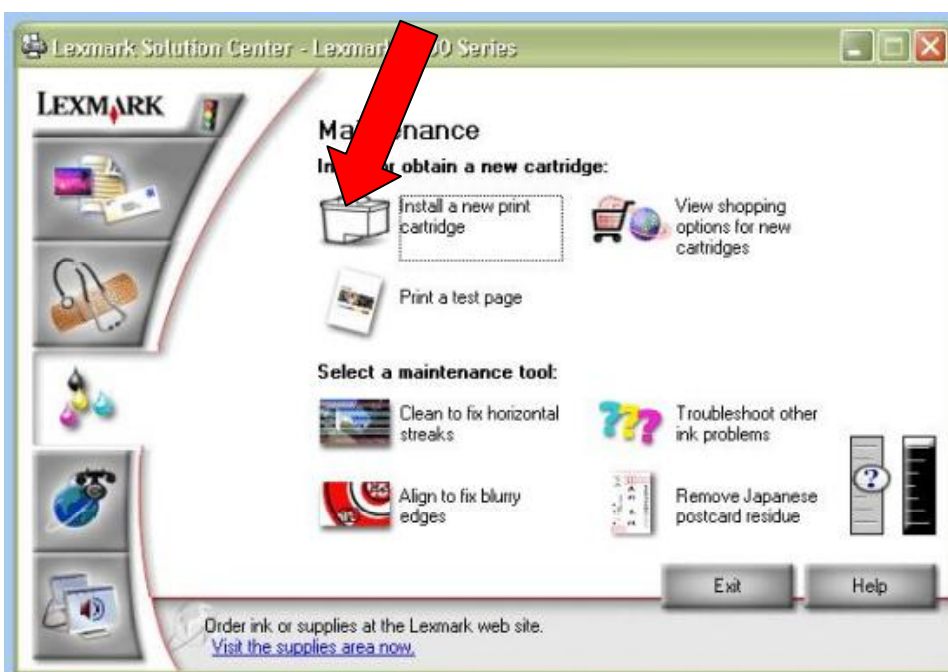
## Step 1

From the desktop of your PC, identify the 'Lexmark Solution Centre' icon, and double click on it. The image below should now come up.



From the menu on the left of the box you will need to click on 'Maintenance'

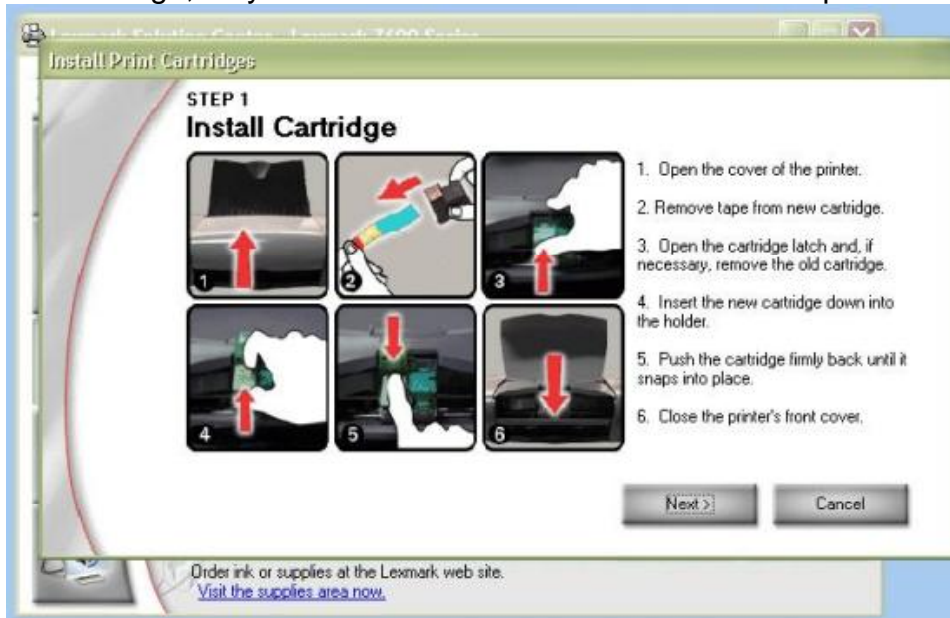
## Step 2



Now click on the 'Install a new print cartridge' icon

### Step 3

Before installing the cartridges into the machine, make a note of the number on the label of the cartridge, as you will need to know this at the next step.

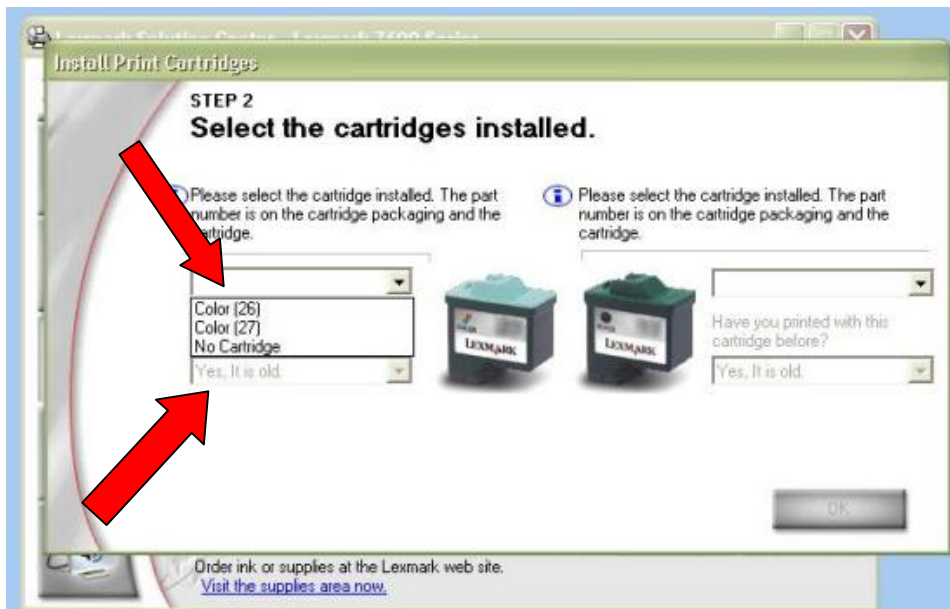


Make sure the cartridges are installed correctly, as the instructions on your screen show.

**Please note:** Refilled cartridges may not always have 'Tape' to remove. If they do, this will be a **blue** plastic tape. Do not attempt to remove anything else, as you risk damaging the electrical contacts, and the cartridge will become un-useable.

Once the cartridges are installed correctly into the printer, click 'Next'

### Step 4



From the drop down menus on screen, you will now need to select the relevant number. This is the number from the label on the cartridge. If the number on the cartridge is a long one, it is only the last two figures you need (e.g. **17**, **20** or **70**).

From the lower menu on screen, select 'No, it is new' on the one below the cartridge/s you have replaced.

This will reset the ink level indicators to full. Then click 'OK'

### Step 5

You will now be instructed to print an alignment page. Follow the instructions on screen to complete the installation process.